
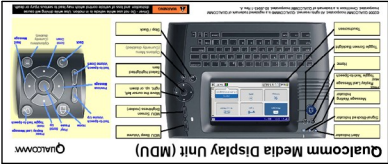


Read and send messages with MDU. Your company may use it for other services too, such as paperless logs. A color touch screen and four-way selector button make the display easy to use.

Start, stop, and replay messages without ever taking your eyes off the road with the Remote Control Device (RCD). It has a four-way selector similar to the MDU.

Use the visor card or contact your driver manager for tips.



MAY CONTAIN U.S. AND INTERNATIONAL EXPORT CONTROLLED INFORMATION

What else is important?

Open for step-by-step installation and verification details.

- 1 Take inventory. Make sure everything is there.
- 2 Plan the installation. Decide where to put each component.
- 3 Install the backup battery, if the unit is brand new.
- 4 Attach the coiled display cable to the display, if needed.
- 5 Position the hardware. Keep the remote handy while driving.
- 6 Check the connections. Make sure nothing has come loose.
- 7 Apply power. Confirm that everything is connected first.
- 8 Verify the system. Check specific screens for feedback.
- 9 Send a test message. Let dispatch know you are on the air.

What do I need to do?

Return Material Authorization (RMA)

An RMA number is needed before returning anything to Omnitracs. To obtain an RMA number, log onto *iq.omnitracs.com* or call Omnitracs Customer Support at (800) 541-7491.

RMAs are issued for defective individual components only.

Do not return the entire bag.

If you have an RMA number that authorizes the return of the Mobile Application Server (MAS) or Terrestrial Data Modem (TDM):

1. Disconnect the power.
2. Disconnect only those cables that are absolutely necessary.
3. Snip the fasteners (also known as “Christmas trees”) that attach it to the bag.

Installing the replacement component is simple because each cable fits only one receptacle. Use the new fasteners and ties to secure the hardware and cables.

If you have an RMA number authorizing the return of the Media Display Unit (MDU):

1. Disconnect the power.
2. Remove the back housing of the MDU with a #10 Torx Allen wrench.
3. Snip the cable tie wraps.
4. Disconnect the coiled display cable.
5. Replace the housing.

When the new display arrives, reattach the cable by following step 4 on the other side of this Installation and Service Guide.



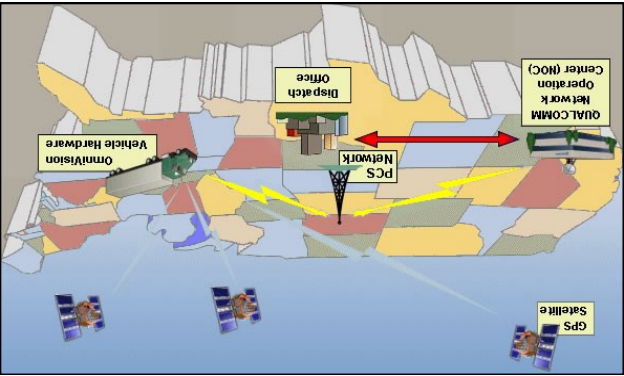
NOTE: REMOVE THE BATTERY before returning the MAS. The replacement will **NOT** include a new battery.

Including it will incur a disposal fee and require the purchase of a new battery.

Your dispatcher sends messages to the Network Operations Center, which are relayed to you over a terrestrial data network. You receive them and reply, using the same high-speed network.

Along with electronic forms (for example, load assignments) and freeform text messages (where you can type conversationally), the MCP sends other data, such as your GPS-calculated position, in a binary computer format instead of text.

When new messages arrive at the vehicle, the Media Display Unit (MDU) alerts you by sight and sound.



How does it work?

- Text-to-speech—Listen to messages while driving. You decide if and when to stop and respond.
 - Over-the-air software upgrades—Experience improvements and enhancements to the system without taking the truck off the road for service.
 - Vehicle location and position history—Automatically provide your dispatcher with information that helps the customer know when to expect you.
- Key features:
- The MCP provides two-way communications between you and dispatch, improving productivity and safety. The portable unit uses a high-speed terrestrial data network.

What is the Mobile Computing Platform (MCP)?

INSTALLATION AND SERVICE GUIDE

Mobile Computing Platform (MCP) Portable Unit



⚠ WARNING

Driver – Do not use while vehicle is in motion.

Use while driving will cause distraction and loss of vehicle control which may lead to serious injury or death.

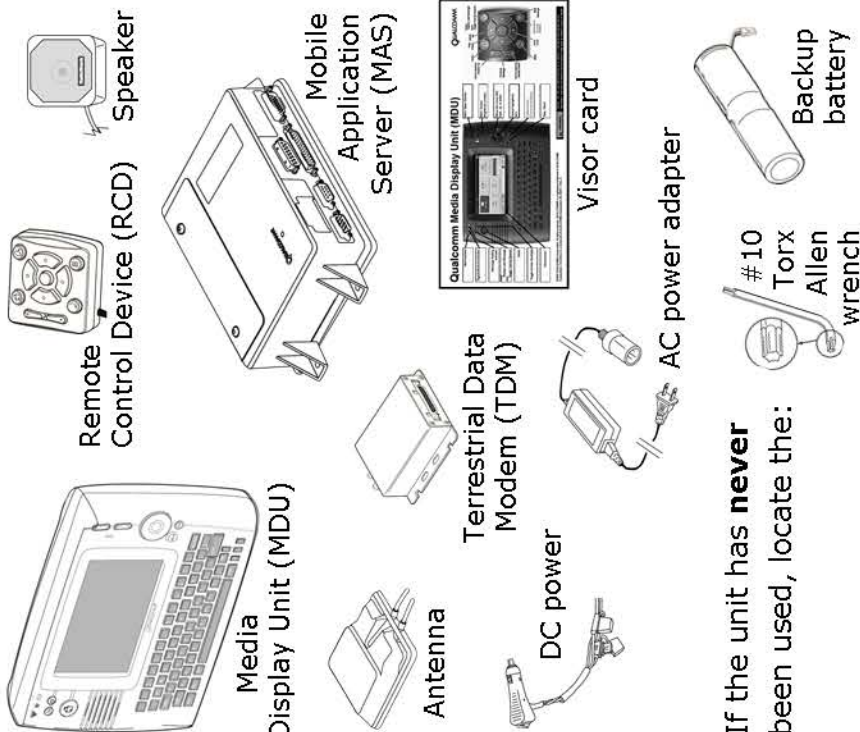
MCP Terrestrial Portable Unit

Start Here

Easy Setup

1 Take inventory

Confirm that the unit contains the following:



If the unit has **never** been used, locate the:

2 Plan the installation

Carefully select places for:

1. **The antenna**, giving it a clear view of the sky.
Example: on the dash by the windshield.
2. **The remote control**, allowing you to reach for it without taking your eyes off the road.
Example: near the radio.
3. **The speaker**, taking into consideration the noise level in the cab.
4. **The unit**, finding a place where you can zip it up and keep it out of the way while driving.
Example: behind your seat.

3 Install the backup battery

These steps in Section 3 are required only **ONCE**, prior to the first usage. If others have already used the unit, skip to Section 6.



1. Open the MAS battery door using the #10 Torx Allen wrench.
2. Insert the battery's connector into the socket.
3. Replace the door.

4 Attach the coiled display cable

The steps in Section 4 are also required only **ONCE**.



1. Remove the MDU's back housing with a #10 Torx Allen wrench or driver.
2. Remove the protective end cap on the cable.
3. Plug the cable in.
4. Route the cable through the channel and out the side.



5. Secure the cable with tie wraps for strain relief and plug the unused cable exit.
6. Reinstall the housing.

5 Position the hardware

Execute the plan you made in Step 2.

6 Check the connections

All cables come pre-connected, with the possible exception of the coiled display cable. (If you are the first person to use the unit, you attached it in step 4.) Carefully examine all connections and hand tighten any that are loose. At the same time, inspect the cables and make sure none are strained or damaged.

7 Apply power



Turn OFF the ignition before applying power.

1. Plug the DC connector into the vehicle's cigarette lighter.
2. Monitor the MDU as the MAS boots up (10 minutes or less).

8 Verify the system

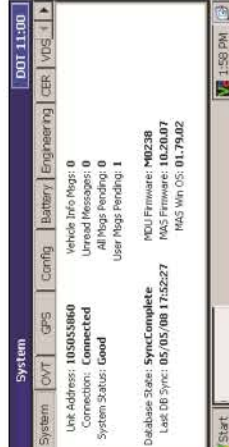


This home screen appears when the boot-up sequence is complete.

1. Scroll down to the bottom.
2. Touch the System icon.
3. Touch the System tab.



4. Confirm that Connection = Connected and System Status = Good.



8 Verify the system (continued)



5. Touch the GPS tab.
6. Verify that Mode = 3-D or Mode = 2-D.

9 Send a test message

Press to return to the Home screen. Both the MDU and the RCD have Home buttons.



1. Touch Messages.
2. Touch Create Msg.

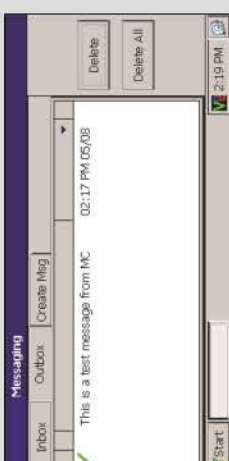


3. Touch Free Form.

4. Type a test message with your truck number in it.



5. Touch Send and then confirm your decision.



6. Touch Outbox. A checkmark indicates success.

If you experience problems, call your driver manager or see the *Mobile Computing and Accessory Installation Guide*.